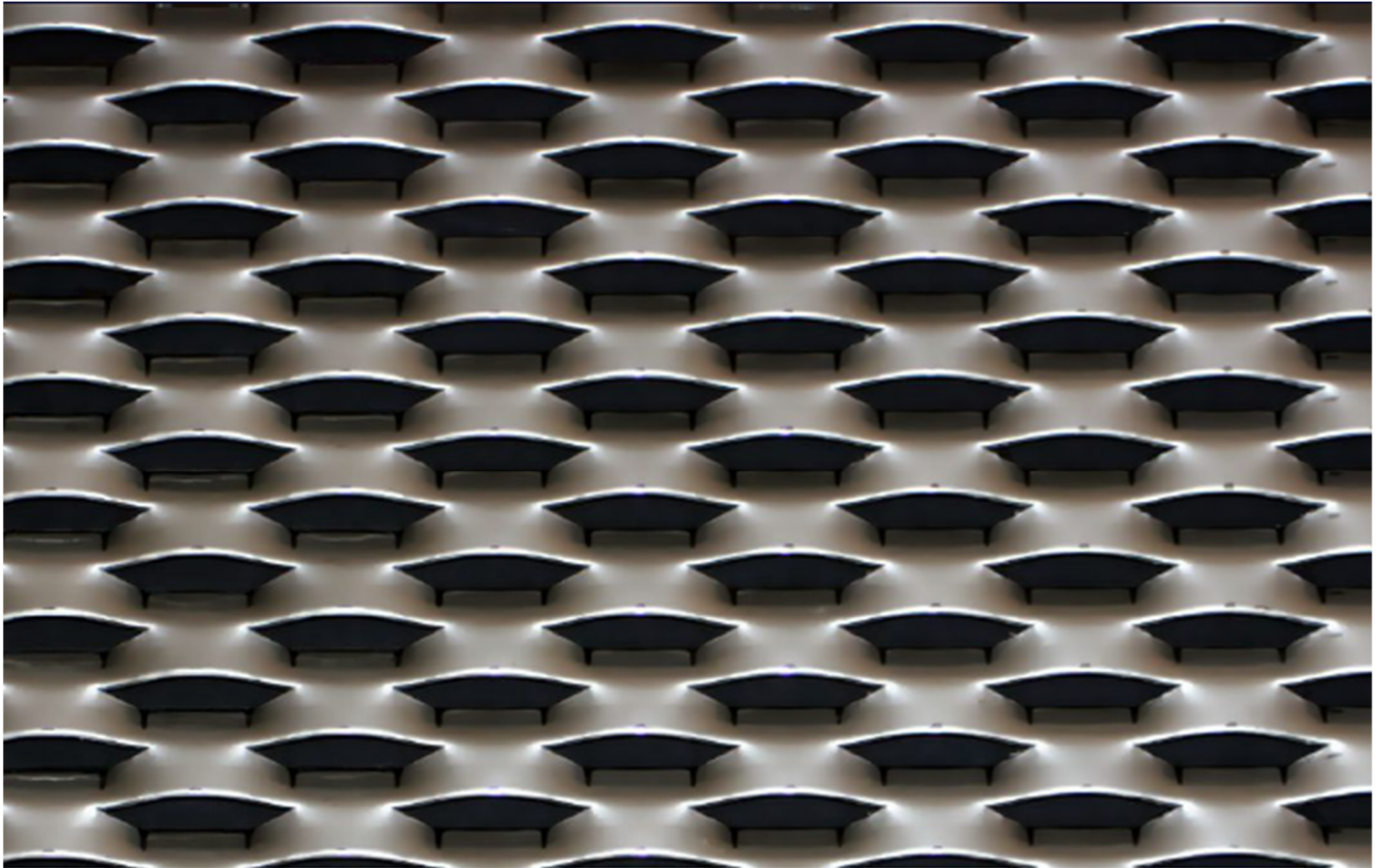








SCHEDA TECNICA LAMIERA STIRATA MOD. OSLO



					
<ul style="list-style-type: none"> ◆ LUNGA DIAGONALE ◆ LONG WAY MESH ◆ LONGUE DIAGONALE ◆ LANGE DIAGONALE ◆ DIAGONAL LARGA 	<ul style="list-style-type: none"> ◆ CORTA DIAGONALE ◆ SHORT WAY MESH ◆ COURTE DIAGONALE ◆ KURZE DIAGONALE ◆ DIAGONAL CORTA 	<ul style="list-style-type: none"> ◆ AVANZAMENTO ◆ STRAND WIDTH ◆ LANIERE ◆ STREGBREITE ◆ ANCHO HILLO 	<ul style="list-style-type: none"> ◆ SPESORE ◆ THICKNESS ◆ EPAISSEUR ◆ DICKE ◆ ESPESOR CHAPA 	<ul style="list-style-type: none"> ◆ ALLUMINIO 99,5% ◆ ALUMINIUM 99,5% ◆ ALU 99,5% ◆ ALLUMINIUM 99,5% ◆ ALUMINIO 99,5% 	<ul style="list-style-type: none"> ◆ TRASPARENZA FRONTALE % ◆ OPEN AREA % ◆ TRANSPARENCE FRONTALE % ◆ OFFENE FLÄCHE % ◆ TRANSPARENCIA FRONTAL %
45	18	8	1,5	3,6 +-10%	15%~
			2	4,8 +-10%	
			3	7,2 +-10%	

- ◆ LAMIERA STIRATA PER SCHERMATURE
- ◆ EXPANDED METAL FOR COVERING
- ◆ METAL DEPLOYE POUR FACADES
- ◆ STRECKMETALL FÜR VERKLEIDUNGEN
- ◆ METAL EXPANDIDO PARA FACHADAS