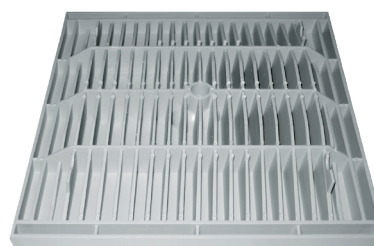
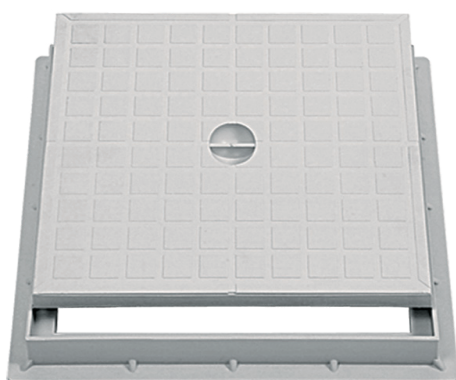


telaio + chiusino "SUPER"



Download



Vista struttura inferiore






INDICE

	Pag.
Utilizzo.....	2
Modelli.....	2
Caratteristiche tecniche.....	2

1 Utilizzo

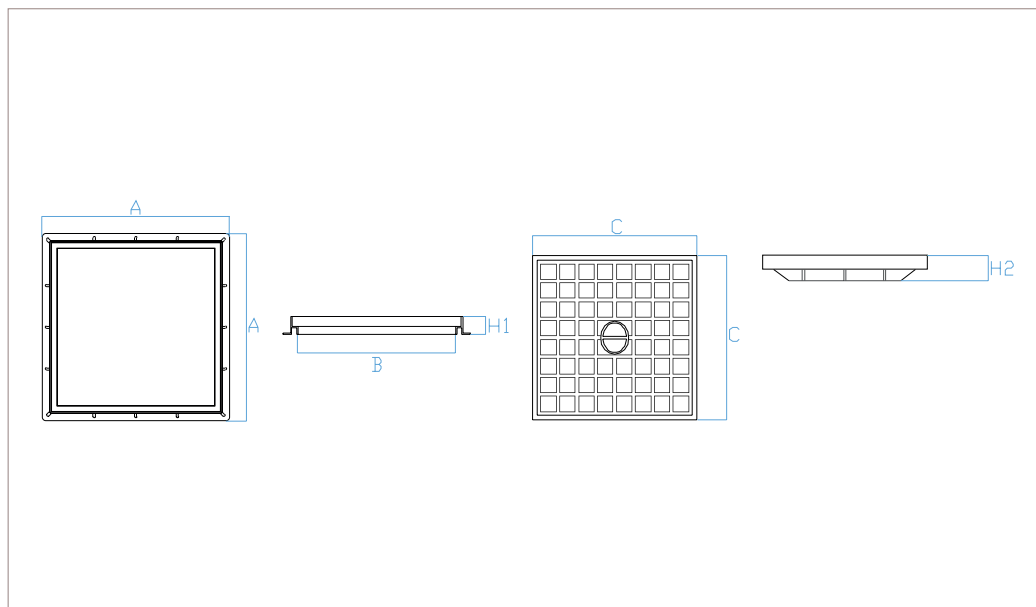
Prodotto da GRUPPO STAMPLAST garantisce una facile applicazione e un'ottima resistenza ad urti e agenti atmosferici. I modelli 35x35cm, 45x45cm e 55x55cm sono dotati di apertura con bullone.

2 Modelli

COD.	MOD.					
TS20+CS20	20x20	●	28	1176	100x120x245	0,613 kg/pz
TS25+CS25	25x25	●	20	720	80x120x245	0,930 kg/pz
TS30+CS30	30x30	●	14	448	100x100x250	1,218 kg/pz
TS35+CS35	35x35	●	7	294	100x120x240	1,936 kg/pz
TS40+CS40	40x40	●	6	252	100x120x240	2,170 kg/pz
TS45+CS45	45x45	●	5	200	100x120x210	4,077 kg/pz
TS55+CS55	55x55	●	4	144	120x120x245	7,000 kg/pz

*MISURE IN CENTIMETRI

3 Caratteristiche tecniche



Materiali

Polipropilene Copolimero
caricato con anti UV.

Colori

Grigio



Elemento di presa
del chiusino

MOD.	A*	B*	H1*	C*	H2*	Carico di rottura
20x20	21,2	16,5	3,9	18,5	2,5	3,5kN
25x25	26,8	20,9	3,8	23,4	3	9,8kN
30x30	32,5	25,2	4	28	2,8	6,8kN
35x35	37,2	30,1	3,8	32,9	3,4	7,3kN
40x40	42,7	38,6	4,2	38	3,3	9,1kN
45x45	47,5	39,7	4,5	43	4,1	--
55x55	58,4	54,3	5,2	53	5,6	16,5kN

*MISURE IN CENTIMETRI

telaio + chiusino "SUPER"